

Information Technology for Practice

October 13–14, 2016, Ostrava,
Czech Republic

THE METHODOLOGY OF PROCESS ANALYST VERIFICATION USING THE IMPLEMENTATION OF SPECIFIC INFORMATION SYSTEM

Vladimír Krajčík

Pavel Vlček

University of Entrepreneurship and Law

PAPRIS Methodology

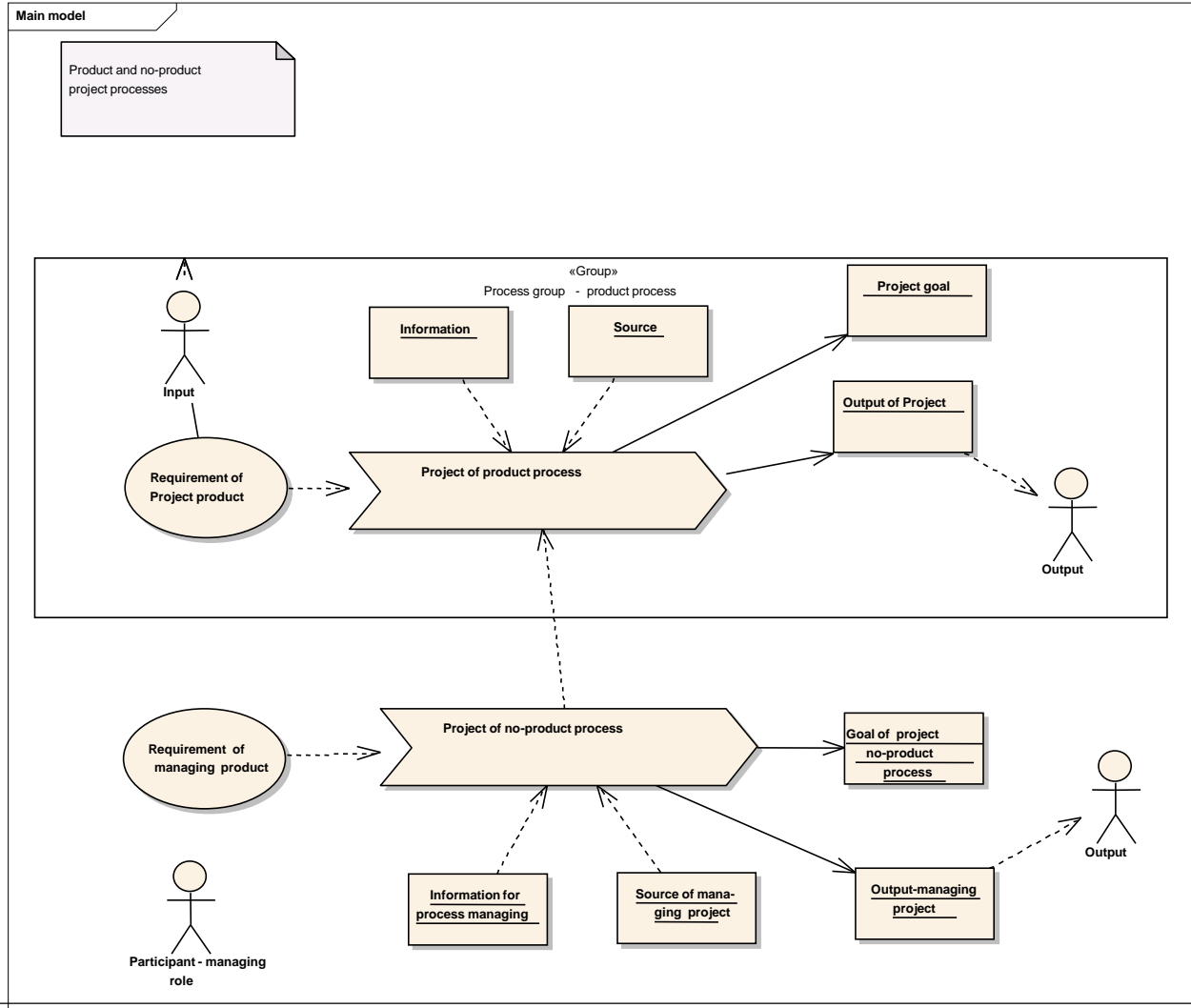
Process Approach - Public and Regional Information System

- **methodology with integrated feature process access for management project of public IS**
- **Use for**
 - **Project of product process**
 - **Project of no-product process**

PAPRIS Methodology

- **Project of product process**
 - Incident activate own production
 - Concrete output with add value for customer
- **Project of no-product process**
 - Incident incident of project management
 - requirement to control, monitoring, purpose, check, evaluate outputs ,
deside and regulate

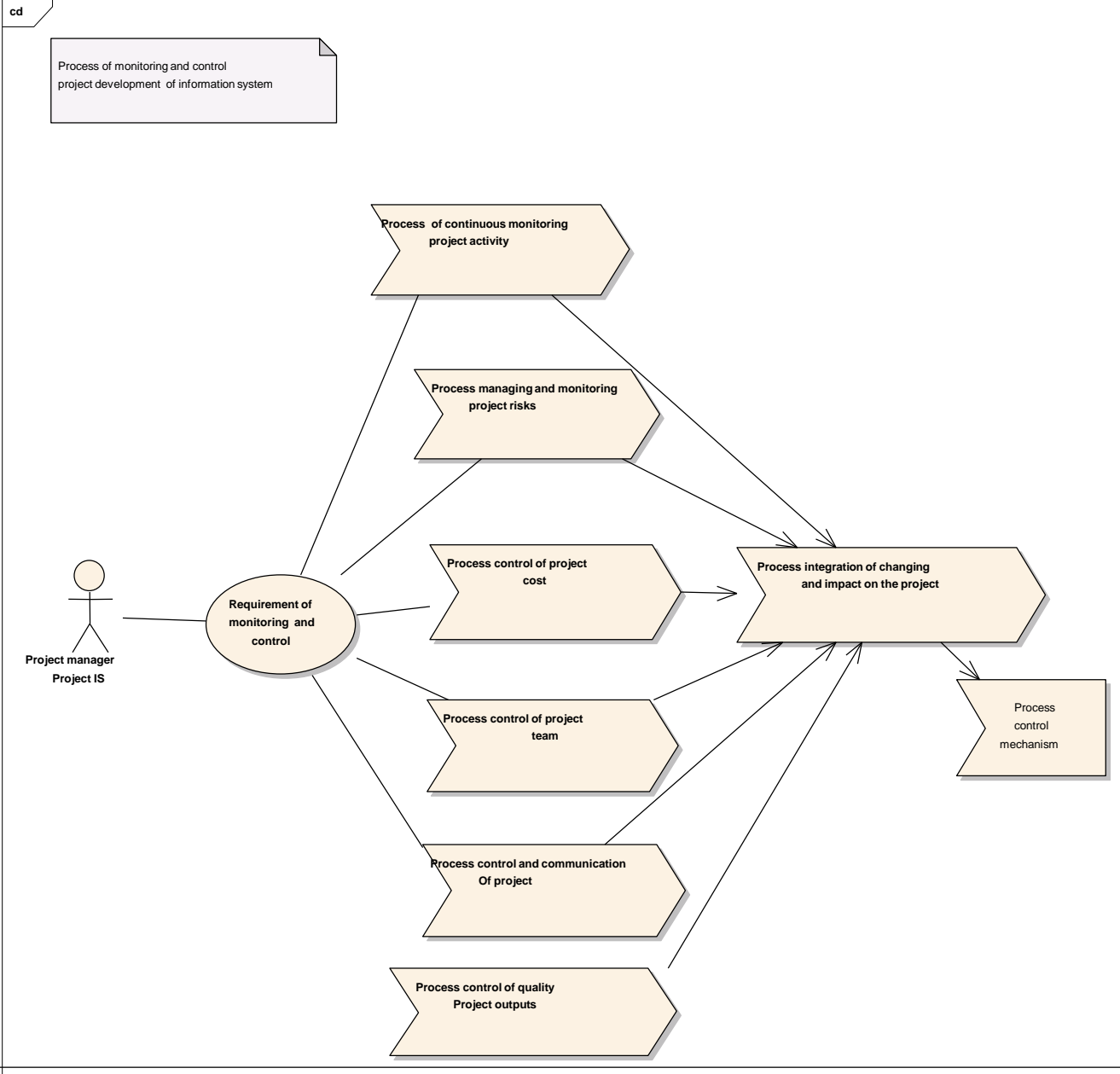
PAPRIS Methodology



Monitoring and checking development of project IS

- **Show benefit of processes in relation on global project outputs**
- **Reduce management of project and enable correction of procurement**
- **Estimate cost and productivity each project roles and project activities**
- **Enable measure specific of state value each project**
- **Determine evaluation of level project metrics**
- **Enable coordinate undesirable deviation or acceleration reduce correction of procedures,**
- **advisable prevent action of state waiting possible project problems**
- **Impact factors which are implement**

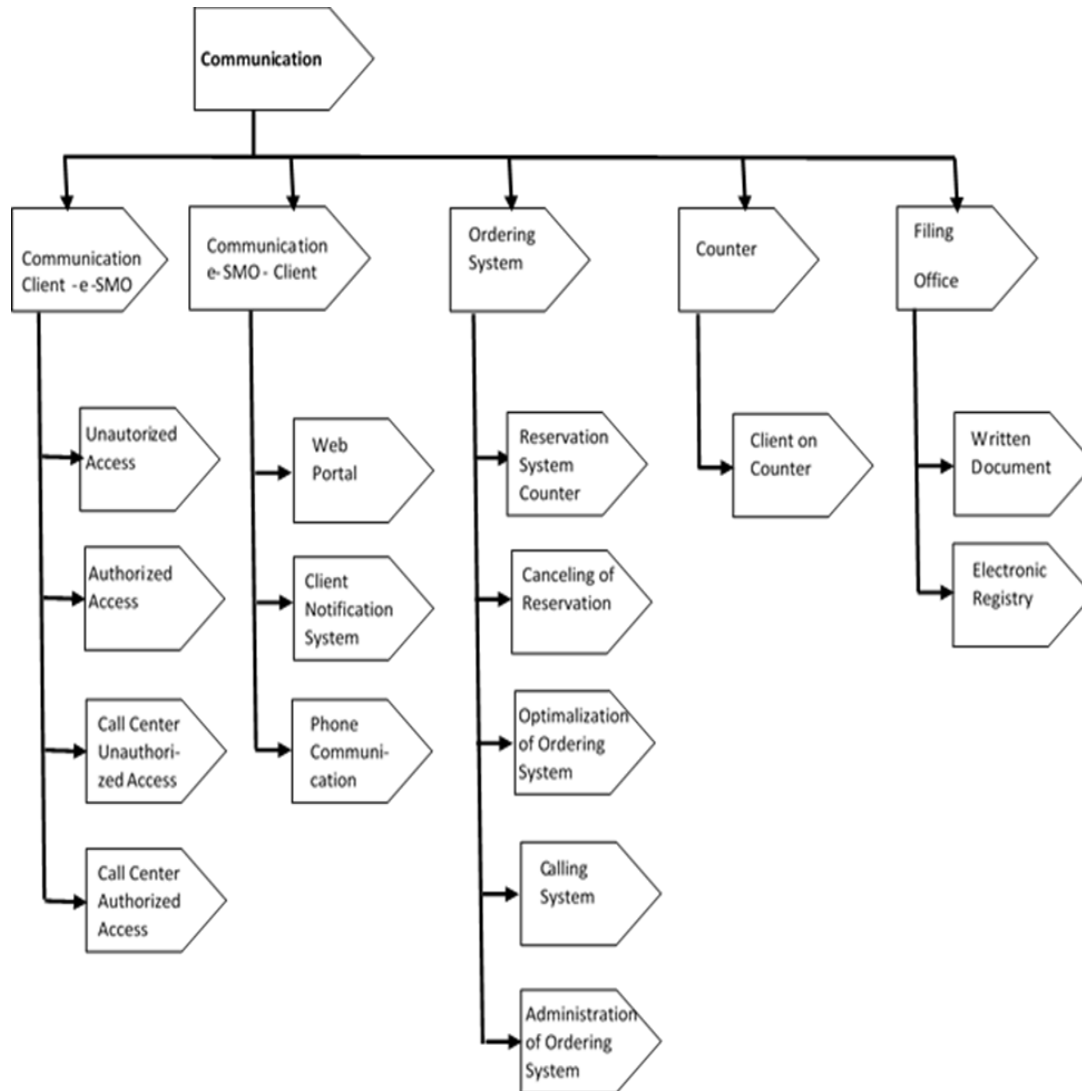
PAPRIS Methodology



Communication between the client and the SMO

- Call Centre - authorized and unauthorized access
- Web Portal - authorized and unauthorized access
- Information Booth - authorized and unauthorized access
- SMS Gateway
- Reservation System Counters - only authorized access
- Client Notification System

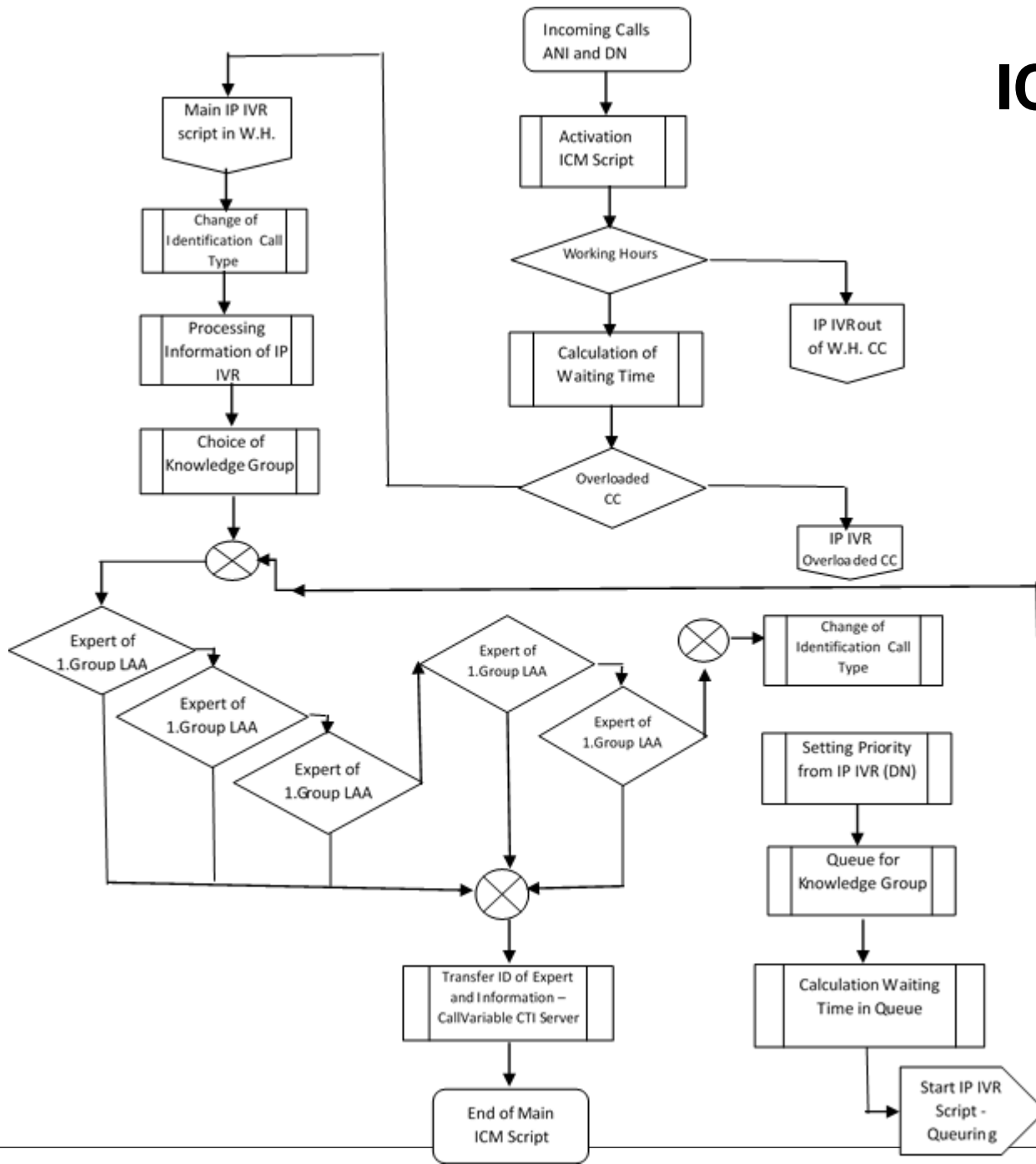
Communication between the client and the SMO



ICM script

- Incoming call
- Activation ICM script
- Time of incoming call
- Calculation on waiting time
- Choice of knowledge group
- Change of identification call type
-e.t.c.

ICM script



Thank you for your attention

vladimir.krajcik@vspp.cz

pavel.vlcek@vspp.cz